

Why do we need it?

The Stirling-Harvey Redevelopment Scheme is part of a \$523 million investment in water source development by the Water Corporation from 1993-2002.

The Corporation accelerated its source development plans when the full impact of climate change on streamflows signalled a potential water supply shortfall.

Streamflow into Western Australian dams was down 40 per cent in the fourth quarter of the 20th century, and supply levels were trending dangerously below demand.

The Stirling Harvey Redevelopment Scheme provides a large, good quality source of water in an area of relatively high and reliable rainfall.

As well as expanding the dam network, the Corporation has worked to develop groundwater schemes.

New artesian bores into the Yarragadee aquifer, north of Perth, are capable of supplying 20 megalitres* a day from 1,000 metres below the surface. New groundwater schemes have also been developed at Neerabup and Lexia.

Groundwater now makes up about 55 per cent of the water going into the South West, Perth Metropolitan and Goldfields water supply systems.

*1 megalitre = 1 million litres



Water Corporation Managing Director Dr Jim Gill and Water Resources Minister Dr Judy Edwards open the Stirling Trunk Main in May 2001.

Valuing heritage

Construction of the Harvey Dam downstream from the existing Harvey Weir will result in the inundation of approximately 370 hectares of land, including the Harvey Weir and three houses, all of which have been assessed as having local historical significance by the Heritage Council of WA.

The Water Corporation, in consultation with the Heritage Council of WA, the Shire of Harvey, and the Harvey Historical Society, has developed a comprehensive Heritage Management Plan.

This plan includes heritage assessments and archival recording of the significant sites, removal and preservation of unique elements, and strategies for the long-term interpretation of the sites, including displays, signage and brochures.

As part of its commitment, the Corporation is funding an extension to the Harvey Tourist Precinct to house a Heritage Display. This is designed to preserve for posterity the essence of the Weir and the historic homesteads.

FOR MORE INFORMATION

Freecall 1 800 892 837

Email: stirling-harvey.project@watercorporation.com.au

Website: www.watercorporation.com.au/harveydam

Site office: Homestead Rd, Harvey (during construction)

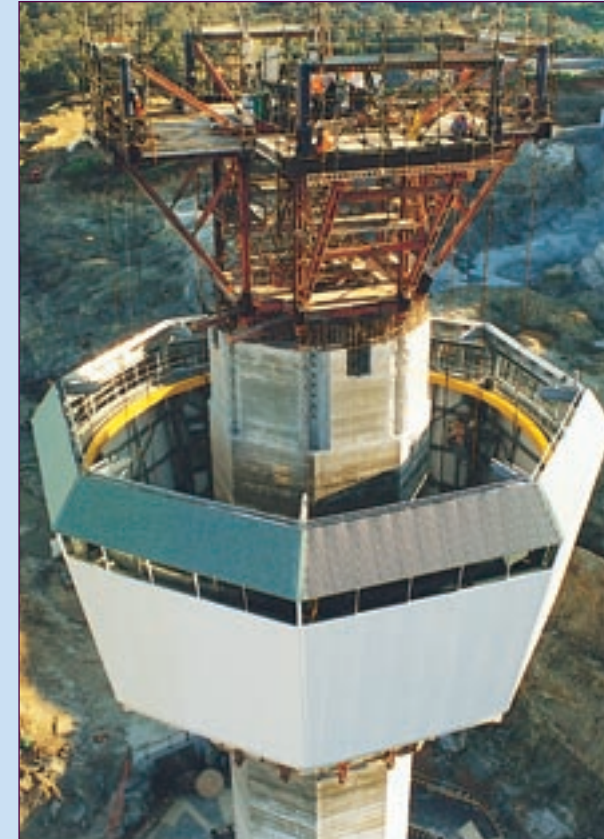


629 Newcastle Street, Leederville WA 6007

ISBN 1 74043 084 0

September 2001

Stirling-Harvey Redevelopment Scheme



Harvey Dam intake tower hoist house being lifted into place.

- ◆ Harvey Dam completion date June 2002.
- ◆ Working hours 7am-10pm, six days a week.
- ◆ Activities: drilling and blasting in quarry area, construction of dam wall and spillway, clearing, landscaping and rehabilitation.



What is it?

The \$275 million Stirling-Harvey Redevelopment Scheme is an integrated water supply system that transfers water from the Stirling Dam (18 kilometres east of Harvey) to the Tamworth Hill Reservoir (17km south east of Rockingham) via a 106km pipeline called the Stirling Trunk Main.

This Trunk Main, in tandem with the Harris Transfer Main – a 15.5km pipeline linking Harris Dam to the Stirling Dam catchment area – is capable of delivering a significant boost to the water supplies of Harvey, Mandurah, Rockingham and Perth.

Another major component of the Scheme is construction of the Harvey Dam. The new Dam will have a storage capacity of 60 gegalitres*. It will have a full supply level of 78 metres, about 14 metres higher than the existing Harvey Weir, and will supply up to 40 gegalitres of water each year for local irrigation.

The new Harvey Dam is being constructed by Leighton Contractors. It is about 141km south of Perth, 2km east of Harvey and 600 metres downstream from the existing Harvey Weir.

*1 gegalitre = 1 million kilolitres



Artist's impression of the Harvey Dam.

Managing the environment

Good environmental management is a key component of the Stirling-Harvey Redevelopment Scheme.

There are 49 legally binding environmental commitments associated with the project, including the rehabilitation of 200 hectares of land.

Rehabilitation work is being carried out in stages. In the final season it will involve the planting of about 175,000 seedlings and spreading of 200kg of seed over 80 hectares of land adjacent to the Dam and gravel pit.

Some of the plant and seed work has been carried out by the Ngalang Boodja Nursery of Collie – the first fully accredited Aboriginal-run plant nursery in Australia. This nursery is jointly funded by the Water Corporation and the Noongar Employment and Enterprise Development Aboriginal Corporation, and was established as a result of the Stirling-Harvey Redevelopment Scheme.

As well as the rehabilitation work, two parcels of native bush with high conservation values have been purchased by the Water Corporation to offset clearing and inundation impacts. One block is adjacent to the reservoir in Harvey, and the other is in Yarloop. Both will be vested in the Crown and managed by CALM as A Class Reserves.

As part of the project, a comprehensive environmental management system has been developed, and strict environmental measures have been put in place to manage the impacts of dam construction.

A monitoring program covering dust, noise and vibration will continue until construction work is complete, with results displayed regularly at the Shire office.

The Scheme's successful management of environmental aspects of the project has been rewarded with numerous State and National Environmental Awards.

Landscaping will give Harvey an ecotourism boost

Landscaping associated with the dam is scheduled for completion in August 2002. It has been designed in conjunction with the Shire of Harvey.

Features will include an amphitheatre for major concerts and cultural events, a boardwalk and walktrails, a playground, grassed picnic areas with gazebos and barbecues, a viewing platform, a footbridge over the existing gauging weir area, parking and toilet blocks.

Once the facilities are in place, recreational activities on and around the Harvey Dam and reservoir will include:

- ◆ **Picnicking** – Additional areas will be made available at the boat launching area and downstream amenity area.
- ◆ **Fishing** – The Water Corporation will work with Fisheries WA and RecFishWest to maintain trout levels in the Harvey Reservoir. Trout fishing is expected to be artificial lure only.
- ◆ **Marroning** – Marron habitat is being established as part of the project. It will be subject to the usual Fisheries WA regulations. Harvey Reservoir is expected to be a snare-only area.
- ◆ **Canoeing** – There will be canoeing in designated areas of the reservoir, with special launch and recovery areas designed to protect the banks.
- ◆ **Bushwalking** – There will be new bushwalks at the downstream recreation area.



Community Consultation

Wide consultation with the community has been a feature of the Stirling-Harvey Redevelopment Scheme, both in the planning and the implementation stages.

A Harvey Community Consultative Committee, with representatives from the local community, the Shire of Harvey, the local Member, the Land Care District Committee and South West Irrigation, meets regularly.

This committee provides an important link between the community and the Stirling-Harvey Redevelopment Scheme Project Team.

There have also been public meetings, open days, group briefings, school visits, and personal meetings with interested parties throughout the district.

Community input will continue to play an important part in the final implementation phase of the Stirling-Harvey Redevelopment Scheme.



Members of the Harvey Community Consultative Committee tour the dam site.